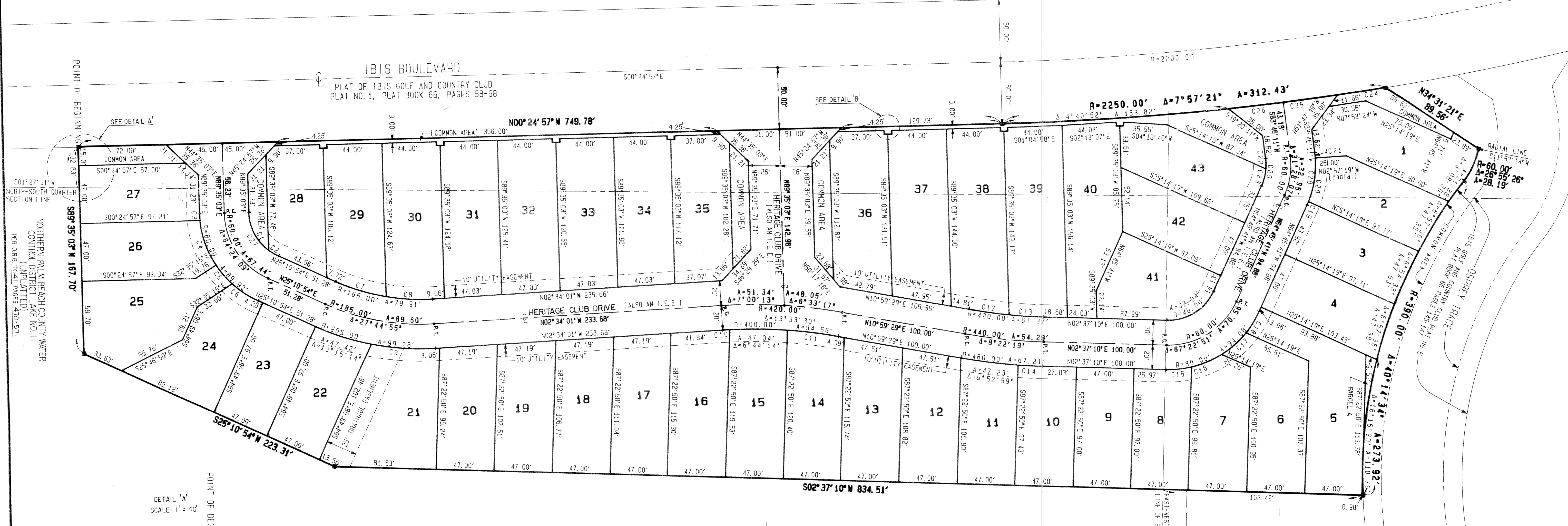
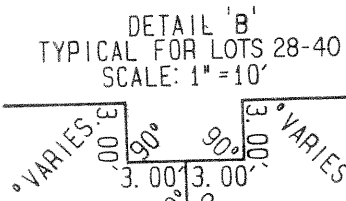
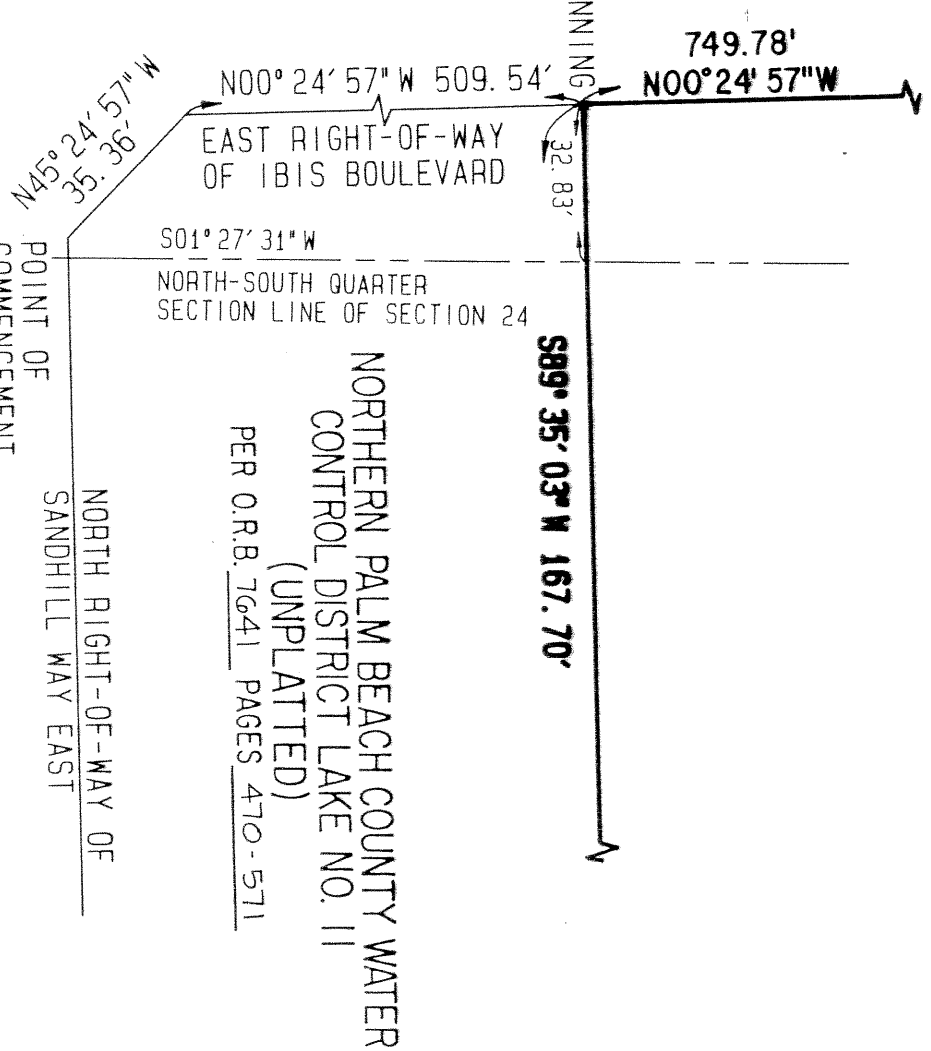


A PLAT OF IBIS GOLF AND COUNTRY CLUB PLAT NO. 10

A PLANNED UNIT DEVELOPMENT
LYING IN SECTION 24, TOWNSHIP 42 SOUTH, RANGE 41 EAST,
CITY OF WEST PALM BEACH, PALM BEACH COUNTY, FLORIDA
OCTOBER 1993
SCALE: 1" = 40'
SHEET 2 OF 2



DETAIL 'A'
SCALE: 1" = 40'



Curve	Radius	Delta	Length
C1	40.00'	51°19'04"	35.93'
C2	40.00'	13°05'05"	9.13'
C3	80.00'	4°08'05"	5.77'
C4	80.00'	27°44'31"	38.74'
C5	80.00'	14°28'05"	20.20'
C6	80.00'	18°03'19"	25.21'
C7	165.00'	14°40'46"	42.27'
C8	165.00'	13°04'10"	37.64'
C9	205.00'	14°29'41"	51.86'
C10	400.00'	9°45'59"	5.35'
C11	400.00'	6°03'16"	42.27'
C12	420.00'	4°28'21"	32.91'
C13	420.00'	3°52'57"	28.46'
C14	460.00'	2°29'19"	19.38'
C15	80.00'	15°14'15"	21.28'
C16	80.00'	18°44'35"	26.17'
C17	80.00'	18°53'39"	26.38'
C18	80.00'	14°30'23"	20.25'
C19	80.00'	2°12'26"	3.08'
C20	80.00'	25°59'12"	36.28'
C21	80.00'	3°16'30"	4.57'
C22	40.00'	12°07'33"	6.47'
C23	40.00'	19°20'34"	13.50'
C24	2250.00'	1°00'29"	39.59'
C25	2250.00'	1°08'00"	44.51'
C26	2250.00'	1°08'00"	44.51'
C27	40.00'	54°24'09"	44.96'
C28	80.00'	31°28'07"	43.94'
C29	40.00'	31°28'07"	21.97'

NORTHERN PALM BEACH COUNTY WATER
CONTROL DISTRICT LAKE NO. II
(UNPLATTED)
PER O.R.B. 7641, PAGES 470-571

NOTES:

- THERE MAY BE ADDITIONAL RESTRICTIONS THAT ARE NOT RECORDED ON THIS PLAT THAT MAY BE FOUND IN THE PUBLIC RECORDS OF PALM BEACH COUNTY.
- BEARINGS ARE BASED ON A BEARING OF S00°24'57"E ALONG THE RIGHT-OF-WAY OF IBIS BOULEVARD, IBIS GOLF AND COUNTRY CLUB PLAT NO. 1, RECORDED IN PLAT BOOK 66, PAGES 58-69, PALM BEACH COUNTY PUBLIC RECORDS.
- ALL LOT LINES ARE NON-RADIAL, UNLESS NOTED OTHERWISE.
- THE BUILDING SETBACKS SHALL CONFORM TO THE CITY OF WEST PALM BEACH ZONING CODE.
- NO BUILDINGS OR ANY KIND OF CONSTRUCTION SHALL BE PLACED ON UTILITY OR DRAINAGE EASEMENTS, EXCEPT DRIVEWAYS.
- NO STRUCTURES, TREES OR SHRUBS, SHALL BE PLACED ON DRAINAGE EASEMENTS, EXCEPT DRIVEWAYS.
- LANDSCAPING ON UTILITY EASEMENTS OTHER THAN FOR WATER OR SEWER SHALL REQUIRE PRIOR APPROVAL OF ALL UTILITIES OCCUPYING SAME.
- WHERE A DRAINAGE EASEMENT AND ANY OTHER TYPE OF EASEMENT CROSS, ANY AND ALL USES FOR DRAINAGE PURPOSES SHALL TAKE PRECEDENCE.

LEGEND

- - PERMANENT REFERENCE MONUMENT (P.R.M.)
- - PERMANENT CONTROL POINT (P.C.P.)
- - CENTERLINE
- R - RADIUS
- A - ARC LENGTH
- Δ - CENTRAL ANGLE
- I.E.E. - INGRESS-EGRESS EASEMENT
- P.C. - POINT OF CURVATURE
- P.T. - POINT OF TANGENCY

THIS INSTRUMENT WAS PREPARED
BY: MARK D. BROOKS
PROFESSIONAL LAND SURVEYOR
STATE OF FLORIDA NO. 3426
FOR: TIMOTHY J. MESSLER, INC.
600 SANDTREE DRIVE, SUITE 301
PALM BEACH GARDENS, FL 33403

NOTICE: THERE MAY BE ADDITIONAL RESTRICTIONS THAT ARE NOT RECORDED ON THIS PLAT THAT MAY BE FOUND IN THE PUBLIC RECORDS OF PALM BEACH COUNTY.

DESIGN	5
DRAWN	3
CHECKED	2
NO	1
DATE	
REVISION	
APPD. BY	

Timothy J. Messler, Inc.
CONSULTING ENGINEERS

600 Sandtree Drive, Suite 301, Palm Beach Gardens, Florida 33403

PROJ. NO. 92-049
SCALE: 1" = 40'
DATE: JAN. 1993
SHT. 2 OF 2